

# Weather Message

WxLocal  
Current Weather Conditions

Users Guide V1.8  
December 25, 2006

# Table of Contents

1.	Software Overview .....	1
2.	Software Installation – General Notes .....	1
3.	Software Installation – WxLocal .....	2
4.	WxLocal Operation .....	2
	Setup – Weather Sites .....	3
	Setup – General Settings .....	5
	Setup - Weather Items .....	6
	Setup – Ingest Paths.....	7
	Reporting Grid.....	7
	System Tray Temperature .....	8
5.	Future Direction .....	9
6.	Program Assistance.....	9
7.	Known Problems .....	9

## 1. **Software Overview**

Weather Message's WxLocal is a standalone current weather conditions receiving package. WxLocal runs from your system tray and provides current weather conditions from reporting stations around the world. You can even see one stations temperature in the system tray.

WxLocal works by retrieving weather conditions from the National Weather Service's web servers. This information is decoded and presented for easy use. You can configure WxLocal to show you the reporting stations and weather elements you want.

In addition to providing information on your screen, WxLocal can save the received conditions to an external file for processing by other programs. It is commonly used with Weather Message EMWIN software.

Why would you want to use WxLocal? It allows you to receive current weather conditions, view the current temperature in the system tray and does not have any annoying ads. Because you can control the time the program requests data, it has a low impact on your Internet connection.

Weather Message – WxLocal can be downloaded from the Internet and has a 60-day evaluation period. You can download it at <http://www.wxmesg.com>.

**Note:** Due to the nature of the Internet and the National Weather Service's Internet servers, data may not be available or current at all times. This situation is beyond the control of Weather Message.

## 2. **Software Installation – General Notes**

WxLocal can be purchased on CD or downloaded from the Internet. The CD should automatically load the installation program.

If you download the software from the Internet, you will need the full installation. This install program is named WxLocalcd.exe. It contains all of the files necessary for a full installation.

Updates to the software can also be downloaded from the Internet. The program updates only contain changes to WxLocal. It cannot be used for a full installation. The name of this file is WxLocalpt.exe.

WxLocal can be uninstalled using the standard Windows Add/Remove Programs facility. The uninstaller will not delete files created while running Weather Message. After uninstalling the software, you can safely remove the WxMesg directory.

**Note:** If your installation will use multiple user login names/profiles, we recommend that you install WxLocal using the administrator login. This will insure that all users have access to the programs.

**Note:** It is not necessary to uninstall a previous version of WxLocal before installing an updated software version. Uninstalling the software will delete its operating setup information.

### 3. **Software Installation – WxLocal**

If you received a CD or have downloaded WxLocalcd.exe from the Internet, the installation program will go through the steps for installing the software.

The following files are installed in the WxMesg directory.

WxMtSite.dat	Contains a list of weather sites.
LocSites.dat	Contains a list of user selected sites to report. setup for paging by WxPager.
WxLocal.exe	The WxLocal executable file.

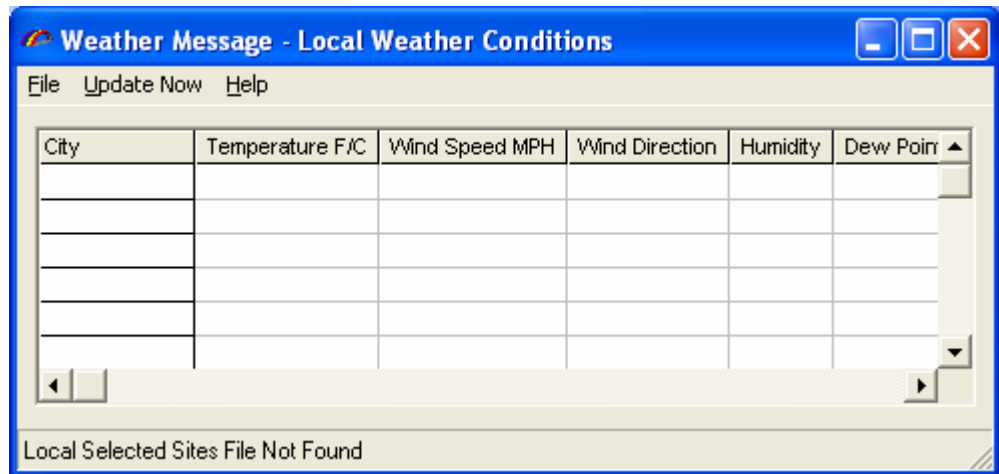
The following files may appear in the WxMesg directory.

LocalLog.txt	Contains messages generated by WxLocal. This log contains a list of received data and errors during program operation.
LocalLog.old	Contains the previous log file.

After you have installed this software, it will appear in your Start Programs menu under the title “Weather Message”.

### 4. **WxLocal Operation**

After installing Local, you are now ready to setup the software to retrieve weather data. First start WxLocal, this is done by clicking on Start, Programs, Weather Message, then WxLocal. The following screen will be displayed.

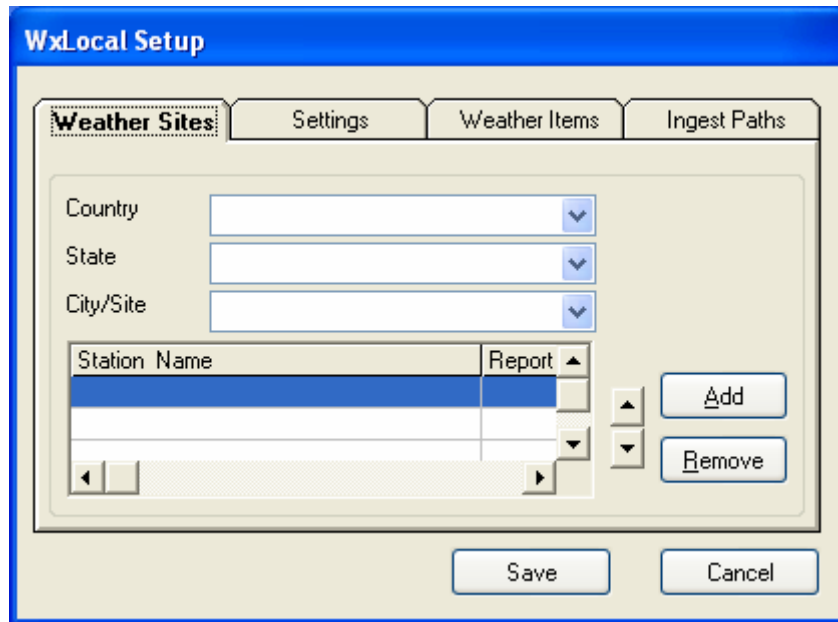


The buttons on this screen perform these functions.

- a. The *File* menu option allows you to Setup the program, View the Log File, Print the weather data, or Exit the program.
  1. The *Setup* button is used to establish program parameters.
  2. The *View Log* button is used to view the program's logfile.
  3. The *Print* button is used to print the weather information displayed in the grid.
  4. The *Exit* button stops the program.
- b. The *Update Now* button is used to immediately retrieve the weather conditions for the selected stations.
- c. The *Help* button tells information about the program.

### **Setup – Weather Sites**

Click on the *File* button and select *Setup*. You will see this screen.



This screen is used to select the weather reporting stations to retrieve. Use the *Country* box to specify the country. You can type part of the county name to begin the selection, or use the drop down arrow.

After selecting the *Country*, you can now select a *State*. You can type part of the state name to begin the selection, or use the drop down arrow.

After selecting the *State*, you can now select the *City/Site* (weather reporting station). You can type part of the city/site name to begin the selection or use the drop down arrow.

When you have selected a *City/Site*, click on the *Add* button to add this site to your list. You can position the sites within your list by using the up and down arrows to the left of the *Add* and *Remove* buttons.

The column labeled Reporting controls whether the program creates a text file with the weather information for processing by other programs. To enable reporting, right click on the line that you want to enable, under the Reporting column. You will see an option to enable or disable reporting.

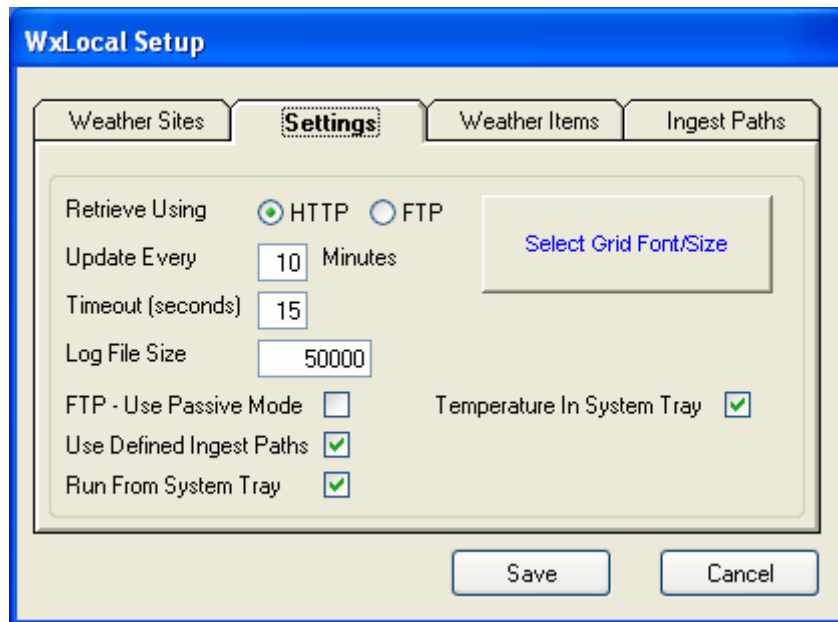
To delete a Station Name, click on the line that you want to delete and then click on the *Remove* button.

Note: If you want the temperature for one station to appear in your system tray, make sure that station is the first one in the list. You can

position that station by using the up and down arrow buttons to the left of the *Add* and *Remove* buttons.

## Setup – General Settings

The Settings Tab is used to setup general program operation. Click on the Settings Tab and you will see this screen.



The *Retrieve Using* option selects the protocol that will be used to retrieve the weather reports. Select HTTP or FTP. Note: The HTTP protocol retrieves the reports faster and is the default option.

The *Update Every Minutes* option is used to specify how often the program will retrieve data. The suggested setting is 20 minutes. This is the standard reporting rate for most stations.

The *Timeout* field allows you to specify the maximum amount of time the program will wait on the NOAA servers to respond.

The *Log File Size* field allows you to specify this size of your log file, LocalLog.txt. The default is 50,000 bytes.

The *FTP – Use Passive Mode* check box, when checked, will instruct the program to use the passive mode to communicate with the NOAA server.

The *Use Defined Ingest Paths* check box, when checked, will cause the program to use the ingest paths defined in the ingest programs, WxByte and WxIngest. If you want to define your own ingest paths for WxLocal, remove this check.

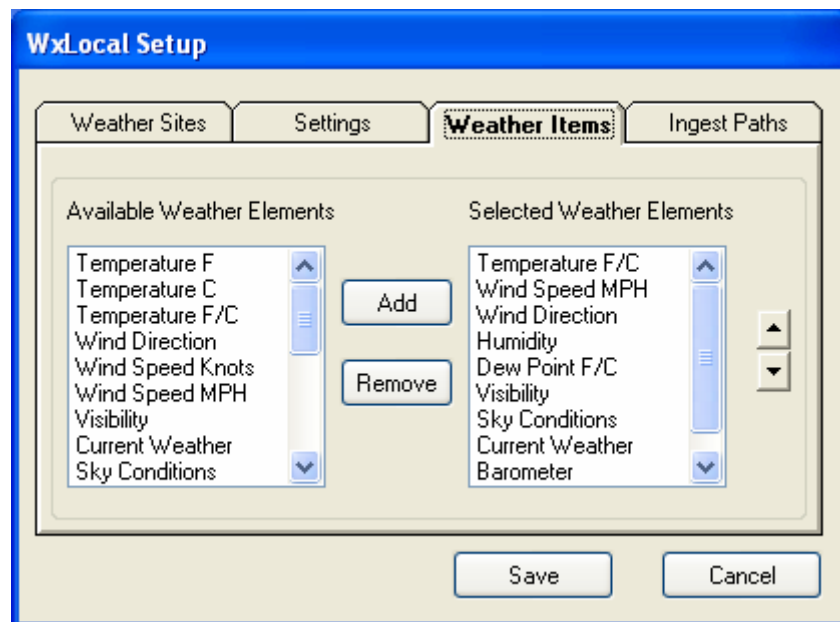
The *Run from System Tray* option controls whether the program runs from the system tray or the task bar. Put a check mark here to run from the system tray.

The *Temperature in System Tray* option controls whether the program displays the temperature for the first reporting station in the system tray. Put a check mark here to show the temperature for the first station in the grid.

The *Select Grid Font/Size* button is used to select the font, font size, and color of the text appearing in the reporting grid. Click this button to select any of these options.

## Setup - Weather Items

The Weather Items Tab is used to select the weather elements that will be displayed in the reporting grid.



The items displayed in the right pane, titled Selected Weather Elements, will appear in the reporting grid. You can add items by clicking on an Available Weather Element in the left pane and then click the *Add* button.

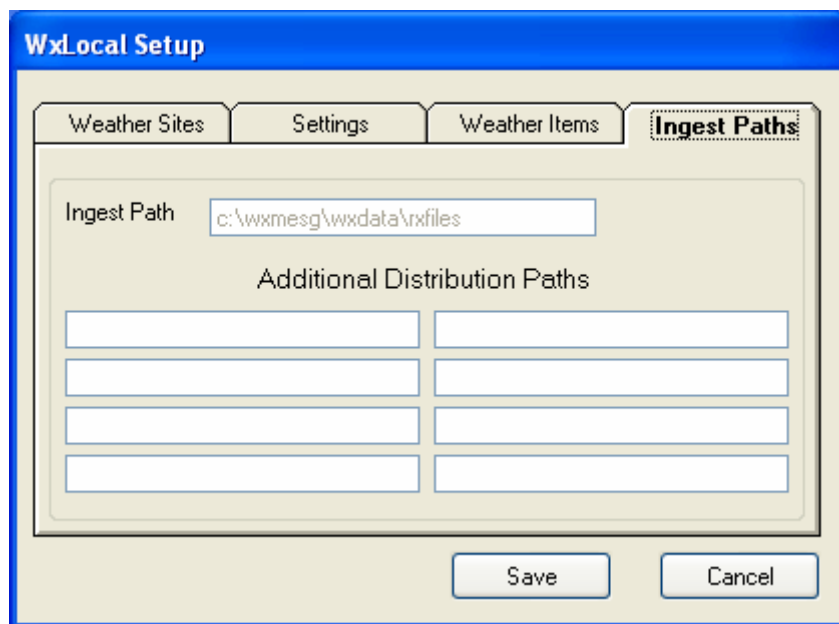


You can remove Selected Weather Elements clicking on the item and then clicking *Remove*.

You can position the Selected Weather Elements by clicking on an item and the using up and down arrow buttons to move the item.

## Setup – Ingest Paths

The Ingest Paths Tab is used to specify directories to receive text files created by the reporting option.



Enter the ingest directories that you want the files copied to when they are received.

**Note:** If the *Use Defined Ingest Paths* setting is checked, you will not be able to change the paths listed.

## Reporting Grid

When the program is in operation, you will see a screen like this.

City	Temperature F/C	Wind Speed MPH	Wind Direction	Humidity	Dew Point
Alexander City, Thomas C Russell Field	33.8° F / 1° C	0	N 0°	81%	28.4° F / -2
Birmingham,	42.8° F / 6° C	3.5	WSW 240°	57%	28.4° F / -2
Montgomery,	39.2° F / 4° C	4.6	SW 220°	70%	30.2° F / -1

Received KBW/

The height of each row can be changed by moving the mouse over the bottom line of the row, left clicking and holding down the mouse while pulling down the line. You can also change the width of the columns the same way by placing the mouse over the vertical column lines.

Detailed information on the received weather report can be viewed by double clicking on the detail line. Here is an example.

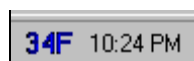
**Detail - Alexander City, Thomas C Russell Field Airport**

Received At	09/03/05 20:50	Station	KALX
Issued At	09/03/05 20:20		
Temperature	77° F / 25° C	Heat Index	78.6° F / 26° C
Dew Point	69.8° F / 21° C	Humidity	79%
Wind Speed MPH	3.5	Barometer	30.06 "
Wind Direction	N 10°		
Visibility	10 Miles		
Sky Conditions	Clear		
Current Weather			
Source	KALX 040120Z AUTO 01003KT 10SM CLR 25/21 A3006 RMK AO1		

Close

## System Tray Temperature

If you select the option to show the temperature of the first reporting station in the system tray, your system tray will look like this screen shot.



**5. Future Direction**

This software will be enhanced only by user recommendations. If you would like for it to do something different, please let me know.

**6. Program Assistance**

You can contact the program author by email at this address [danny@wxmesg.com](mailto:danny@wxmesg.com). If you use mail, sent correspondence to Danny Lloyd, 203 Old Shepard Road, Dadeville, Alabama 36853.

**7. Known Problems**

There are no known program problems at the time of this software release.

Notes:

Weather Message (WxLocal) and associated programs copyrighted by Danny Lloyd, 2002-2004.